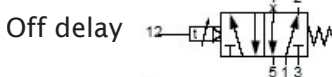
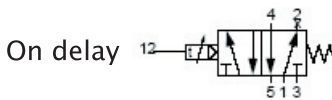
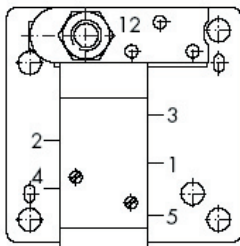
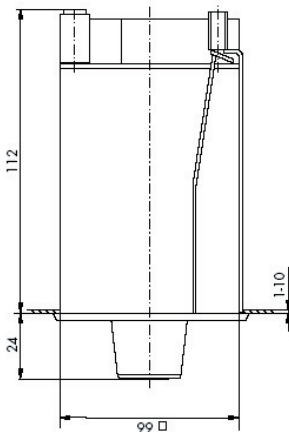
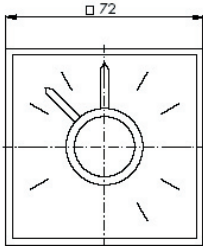
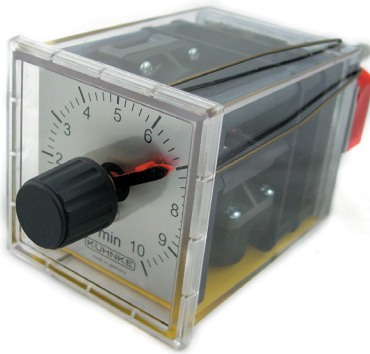


Pneumatic Timer - 54 Series (Clock Face)



- Short and long interval versions
- Panel mounting
- Precise time regulation
- Easy to read clock face display
- Normally Open or Closed
- Maintenance free
- Panel cut out 66mm x 66mm
- Long life steel spool valve

Display	Clock
Mounting	Panel mount
Operating Pressure	0...10 bar
Air Quality	Oil free and dry, 5 micron filtered
Accuracy of setting	±1% end scale value
Operating Temperature	-10...+60°C
Connection	M5 to main valve and pilot
Air consumption with pressure of 6 bar at port 12	Approx. 9l/min at STP
Reset time	Approx 200ms

Part Numbers

54.021	0.3 - 10 secs pneumatic timer NC/NO
54.022	3 - 100 secs pneumatic timer NC/NO
54.023	0.3 - 10 mins pneumatic timer NC/NO
54.024	3 - 100 mins pneumatic timer NC/NO
54.025	0.3 - 10 hours pneumatic timer NC/NO
54.026	3 - 100 hours pneumatic timer NC/NO

The Kuhnke 54 series pneumatic timer is the industry standard. Often branded for Festo, Bosch or Norgren this timer is a proven, rugged and reliable means of timing an all pneumatic circuit. It is an analogue device based upon a clock.

Designed for panel mounting the 54 includes a 5/2 valve with M5 ports, mounted on the back body. The concept is to be able to operate as a NO (normally open) or NC (normally closed) 3/2 valve on time out, by plugging one of the ports. The 54 pneumatic timer depends on a constant bleed of air to operate a clockwork mechanism. This control air then bleeds out to exhaust through a sintered filter on the back of the unit.

Setting the timer is easy. Position the red time hand to the required delay period. When the control air is supplied (to port 12) the timer will start to operate. Time elapsed can be seen on the moving hand. On reaching 0 the timer operates and switches the valve on the rear of the unit. The valve remains in this condition, and control air continues to bleed through the clockwork mechanism, until control air is either removed, or pulsed to restart.

Rotor Stop Versions

A special version of each 54 series timer is available which uses 9l/min to the control port (12) but which then stops the clockwork mechanism until a reset signal is sent. This saves air energy, particularly when long periods may elapse between timeout and reset. It is useful where compressed air supplies are limited. Part numbers 54.050 to 54.055.

Disclaimer:

The information shown in this document is for guidance only. No liability is accepted for any errors or omissions. The designer or user is solely responsible for the safe and proper application of the parts, assemblies or equipment supplied.

Downloaded from: www.kuhnke.co.uk / www.thetimerandcountercompany.com