
The following page(s) are extracted from multi-page Kuhnke product catalogues or CDRoms and any page number shown is relevant to the original document. The PDF sheets here may have been combined to provide technical information about the specific product(s) you have selected.

Hard copy product catalogues, and CDRoms have been published describing Kuhnke Pneumatics, Solenoids, Relays and Electronics; some divided into different books. A list of current publications is available on this web site or from our sales offices. Some may be available for download, but as substantially larger files.

Contact Details

Kuhnke sales and service in the UK

H. Kuhnke Ltd
Unit 6 Focus 303
Focus Way, Walworth Business Park
Andover
Hampshire
SP10 5NY
United Kingdom

Tel: +44 (0)1264 364194
Fax: +44 (0)1264 365991
Email: sales@kuhnke.co.uk

Important Note

The information shown in these documents is for guidance only. No liability is accepted for any errors or omissions. The designer or user is solely responsible for the safe and proper application of the parts, assemblies or equipment described.

Zylinder ISO 6431 - VDMA 24562
 doppeltwirkend mit/ohne Magnetkolben,
 mit einstellbarer Endlagendämpfung
 Kolben Ø 32 - 100 mm

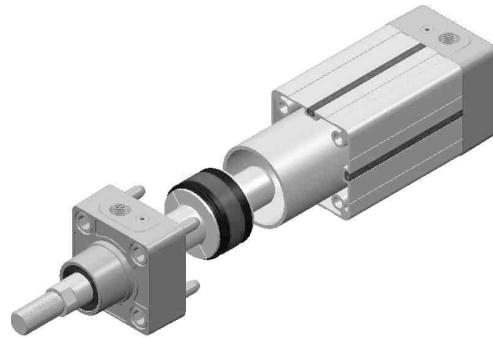
Cylinders ISO 6431 - VDMA 24562
 Double Acting, with/without
 Magnetic Piston, with Adjustable Cushioning
 Piston Diameters 32 - 100 mm

Flexibilität

Die spezielle Konstruktion erlaubt verschiedene Materialien für das innere, ideal runde Präzisionsprofilrohr. Das äußere Profilrohr ist funktional mit Sensornuten und ebener, quadratischer Form.

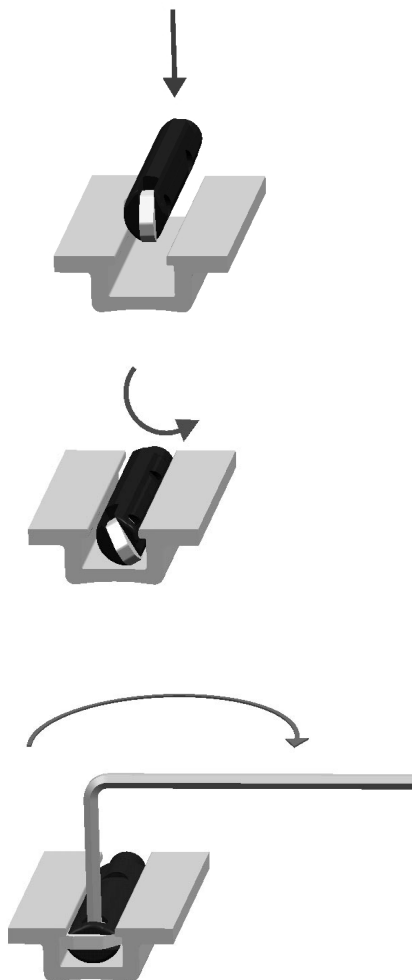
Flexibility

The specific design allows different internal tube materials for any use. The inside tube is perfectly round. The external tube is the functional profile with sensor grooves and a clear square shape.



Die Sensoren werden flächenbündig in der Nut integriert. Sie sind von allen Seiten einzubringen. Die Nuten können mit einem Kunststoffprofil abgedichtet werden.

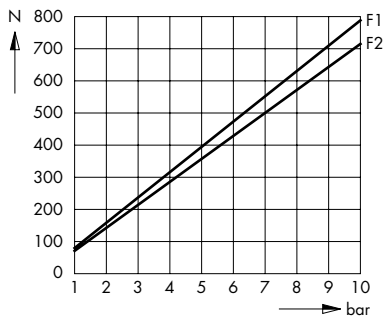
The sensor fits completely into the groove keeping the profile of the external tube clean. You can fit the sensor on all sides and use the plastic strip for any unused grooves.



Statische Zylinderkennlinien*
Kolbdurchmesser

Static Cylinder Characteristics*
Piston Diameter

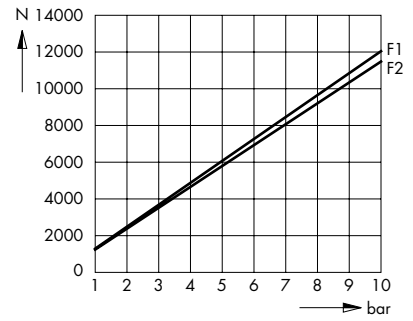
Ø 32 mm



Ø 63 mm



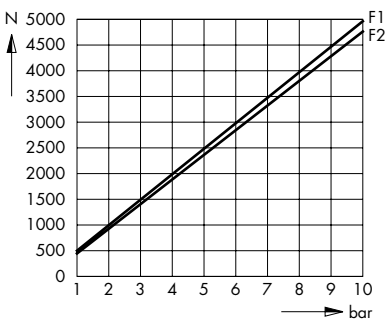
Ø 125 mm



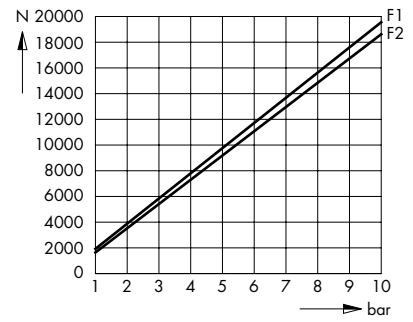
Ø 40 mm



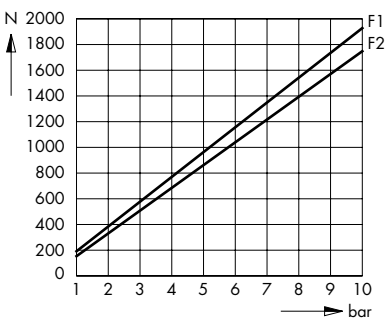
Ø 80 mm



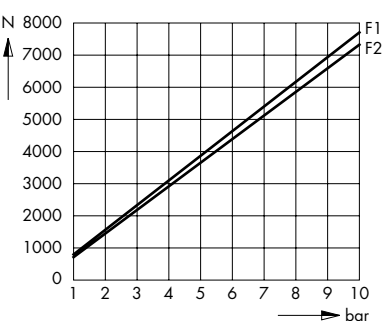
Ø 160 mm



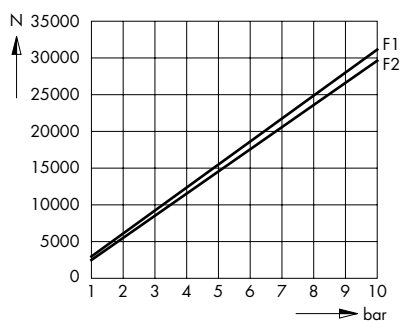
Ø 50 mm



Ø 100 mm



Ø 200 mm



* Für das dynamische Verhalten sind die Zylinderkennlinien mit dem Faktor 0,5 - 0,7 zu multiplizieren.

F1 = doppelwirkende Zylinder im Vorlauf
F2 = doppelwirkende Zylinder im Rücklauf

* The cylinder characteristics are to be multiplied by a factor of 0.5 - 0.7 for the dynamic behaviour.

F1 = double acting cylinders in forward stroke
F2 = double acting cylinders in return stroke